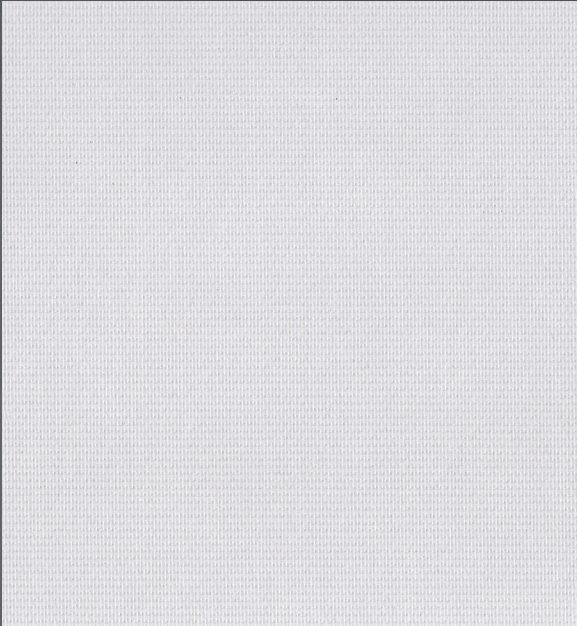
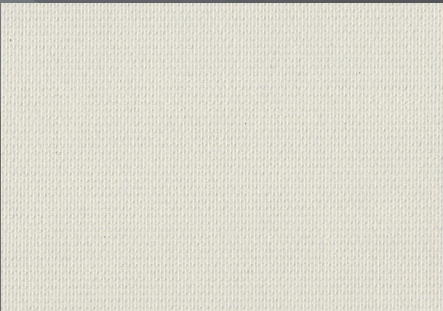


# Apagón Style III™

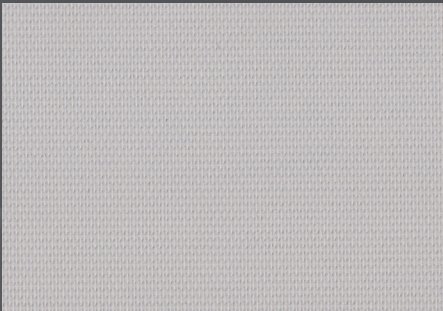
Room Darkening  
Opaque



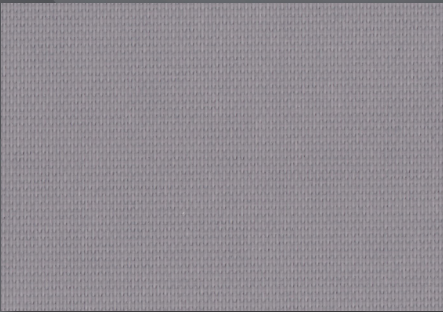
ANWH White



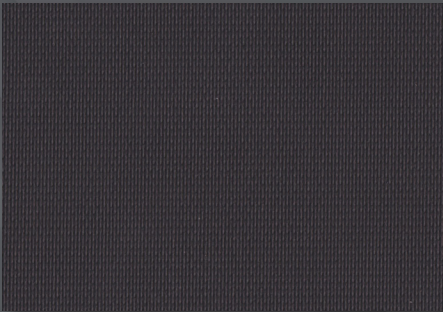
ANBO Bone



ANGR Grey



ANDG Dark Grey



ANBL Black

The high function, strength, durability, and easy cleanability of a laminated opaque fabric, but with a more visually appealing woven look and feel.

Digital sample of actual colors may vary slightly.



# Apagón Style III™ Room Darkening Fabric

## ■ The ultimate blackout fabric for high-intensity applications with a high-end, decorative look.

Apagón Style III is a unique series of woven fiberglass laminated blackouts for roller shade, panel track, and fabric verticals.

With its incredible durability and stability, Apagón Style III is an evolution of the standard PES foam coated blackouts. Apagón Style III can withstand higher heat and direct light; it will not crack or yellow like foam coating. Apagón Style III has a higher tearing strength, and is ultra stable.

Apagón Style III is a 3 ply opaque shade fabric consisting of Poly Chloroethene (PCE) film, fiberglass, and a proprietary coating to ensure light stays out.

This super-duty version of woven textile blackout fabric is suited for Commercial, Institutional, Hospitality, and Residential installations.

### TECHNICAL DATA

<b>Construction:</b>	3 ply (62.1% PCE, 31.6% fiberglass, 6.2% Proprietary Coating)	
<b>Surface Texture:</b>	Back side Laminated with Coated front side	
<b>Colors Available:</b>	White, Bone, Grey, Dark Grey, Black	
<b>Thread Count:</b>	59 threads per square inch (23 per square centimeter)	
<b>Available Widths:</b>	98" (249 cm) Other widths available upon request	
<b>Roll Lengths:</b>	30-yard standard (27 meters)	
<b>Shipping:</b>	Rolls shipped on 3" (7.62 cm) ID paper	
<b>Weight Per Sq. Yard:</b>	12.8 ounces (436.7 grams/m <sup>2</sup> )	(+ or - 2.0) (+ or - 68)
<b>Thickness:</b>	.0131 inches (.333 mm)	(+ or - .002) (+ or - .05)
<b>Tear Strength:</b>	Warp 17.13 lb/in	Fill 11.43 lb/in
<b>Breaking Strength:</b>	Warp 298.26 lb/in	Fill 299.72 lb/in
<b>Washability:</b>	Material may be dusted with a damp cloth. When scrubbing is necessary, warm water, mild detergents, and gentle rubbing are recommended.	
<b>Opacity:</b>	Blackout	
<b>NRC Rating:</b>	0.05	
<b>SAA Rating:</b>	0.05	
<b>Flammability:</b>	National Fire Protection Association Standard 701-2019 Test Method 1	
<b>Other Tests Passed:</b>	ASTM D3335 85a - Lead Testing ASTM Method G-21-15 – Resistance to Fungi	



411 S. Pearl Street | Spiceland, IN 47385  
765.987.7999 | 800.238.7999  
draperinc.com

For additional information, questions, or to request fabric samples, please contact your Draper sales representative or scan to visit [request.draperinc.com](http://request.draperinc.com)

