

**Style PW4550**  
(5% open)



PW4550 P10 Granite

**Style PW4650**  
(3% open)

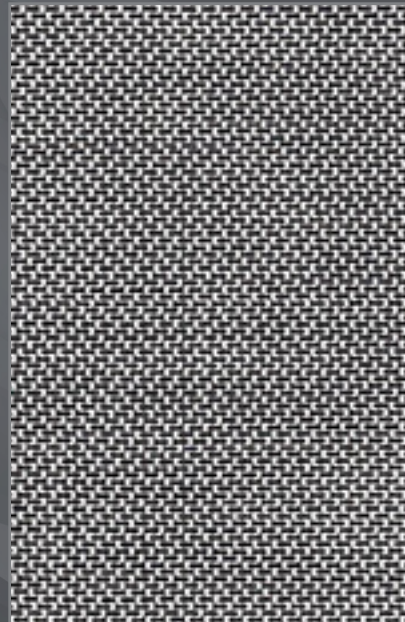


PW4650 P10 Granite

The above styles are also available in the colors shown below.



PW4650 P65 Linen



PW4650 V45 Coal



PW4650 V47 Chestnut

# SheerWeave® Style PW4550 / 4650

Woven from thin and light weight vinyl-coated polyester yarns into a unique twill weave, Styles 4550 and 4650 offer a distinct two-sided appearance that maximizes both outward visibility and solar heat reduction. Style 4550/4650 can also be used in exterior roller shades.

## SHEERWEAVE STYLE PW4550 / 4650

STANDARD WIDTH	63" and 98" (160 cm and 248.9 cm)	FABRIC THICKNESS	<b>PW4550 5%:</b> 0.025 in (0.64 mm) <b>PW4650 3%:</b> 0.026 in (0.66 mm)
ROLL LENGTH	30 Linear Yards (27.4 lm)	OPENNESS FACTOR	<b>PW4550 5%:</b> Approximately 5% <b>PW4650 3%:</b> Approximately 3%
COMPOSITION	17% Polyester / 83% Vinyl on Polyester	UV BLOCKAGE	<b>PW4550 5%:</b> Approximately 95% <b>PW4650 3%:</b> Approximately 97%
MESH WEIGHT	<b>PW4550 5%:</b> 13.0 oz/yd <sup>2</sup> (440.78 g/m <sup>2</sup> )	ACOUSTICAL VALUE	<b>PW4550 5%:</b> NRC 0.10 / SAA 0.11
	<b>PW4650 3%:</b> 13.3 oz/yd <sup>2</sup> (450.96 g/m <sup>2</sup> )		<b>PW4650 3%:</b> NRC 0.15 / SAA 0.18
		ACOUSTICAL PERFORMANCE	NRC (Noise Reduction Coefficient) and SAA (Sound Absorption Average) tested in accordance with ASTM C423-09a.

## SPECIFICATIONS

FIRE CLASSIFICATION	California U.S. Title 19 (small scale), NFPA 701 TM#1 (small scale), NFPA 101 (Class A Rating), IBC Section 803.1.1 (Class A Rating), BS 5867 Part 2 Type B Performance, NFPA 701 TM#2 (large scale), CAN/ULC-S 109 (large and small scale).
BACTERIA AND FUNGAL RESISTANCE	ASTM E 2180, ASTM G21, ASTM G22, AATCC30 Part 3, ASTM D 3273, GREENGUARD Mold and Bacteria Standard ASTM 6329; includes Microban antimicrobial additives.
ENVIRONMENTAL CERTIFICATION	Certified to GREENGUARD and GREENGUARD Gold standards for low chemical emissions into indoor air during product usage.
SAFE USE	RoHS/Directive 2002/95/EC, US Consumer Product Safety Commission Section 101, ANSI/WCMA A 100.1-2007 for lead content and REACH (EC 1907/2006) compliant.
STANDARD USES	Roller shades and panel tracks.
WARRANTY	10-year interior, 5-year exterior

## TECHNICAL DATA

		SOLAR OPTICAL PROPERTIES								SHGC/G VALUE g-tot (glass & blind)			
		TS%		RS%		AS%		TV%		Single 1/4CL	Insulating 1HA	Single 1/4CL	Insulating 1HA
OPENNESS		5%	3%	5%	3%	5%	3%	5%	3%	5%	5%	3%	3%
CODE / COLOR	NUMBER												
Granite	P10	7	6	56	55	37	39	8	8	0.33	0.24	0.33	0.24
Linen	P65	9	7	59	58	32	35	10	8	0.32	0.23	0.31	0.23
Coal	V45	8	5	48	47	44	48	9	7	0.37	0.26	0.37	0.26
Chestnut	V47	9	7	48	48	43	45	11	8	0.37	0.26	0.37	0.26



PRODUCT CERTIFIED FOR LOW CHEMICAL EMISSIONS  
UL.COM/GG  
UL 2818



MIF Seal of Approval



411 S. Pearl St. | Spiceland, IN 47385  
765.987.7999 | 800.238.7999  
draperinc.com



\*TS - Solar Transmittance, RS - Solar Reflectance, AS - Solar Absorptance, TV - Visual Transmittance \*SHGC = Solar Heat Gain Coefficient \*1/4 CL = 1/4" Clear Glass, 1 HA = 1" Heat Absorbing Glass \*Fabrics Installed Internally, Zero-Degree Profile Angle \*Solar Heat Gain Coefficient (SHGC) shown calculated according to Office of Building Technology, State and Community Programs, Energy Efficiency and Renewable Energy, U.S. Department of Energy's definition of SHGC. SHGC represents the percentage of solar heat gain that is transmitted to the interior through the glass and shading system. If you are using glass whose performance is listed in terms of SC, you may convert to SHGC by multiplying the SC by 0.87.



INCORPORATED

© SheerWeave is a registered trademark of PHIFER INCORPORATED.

© MICROBAN is a registered trademark of Microban Products Company.

TM UL, the UL logos and the UL mark are trademarks of UL LLC.

© PHIFER INCORPORATED V18 3027099

621