

# SheerWeave® Style SW7400 / 7450

Room Darkening and Privacy Fabrics



## Style 7400 Room Darkening



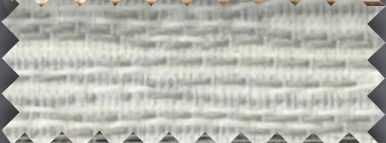
U80 Cotton



U81 Parchment



U82 Sesame



U83 Pebble



U84 Seagrass



U85 Shale



U86 Spice



U87 Flint

## Style 7450 Privacy



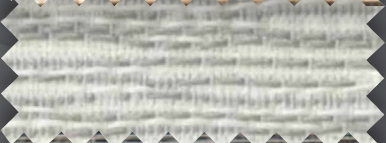
U80 Cotton



U81 Parchment



U82 Sesame



U83 Pebble



U84 Seagrass



U85 Shale



U86 Spice



U87 Flint

Digital sample of actual colors may vary slightly.



# SheerWeave® Style SW7400 / 7450

A picture of refined elegance, Style 7400 layers a subtle textured pattern over a soft, luxurious opaque backing for room darkening. Offering the face fabric of Style 7400, Style 7450 filters natural light while illuminating interior spaces and providing privacy. These fabrics are suitable for roller shades, and panel track systems.

## SHEERWEAVE STYLE SW7400 / 7450

STANDARD WIDTH	118" (300cm).	FABRIC THICKNESS	<b>7400:</b> 0.029 in (0.74 mm)	<b>7450:</b> 0.026 in (0.66 mm)
ROLL LENGTH	30 Linear Yards (27.4 lm).	OPENNESS FACTOR	<b>7400:</b> Room Darkening/Opaque	<b>7450:</b> Privacy/Light-Filtering
COMPOSITION	<b>7400:</b> 100% Polyester with Acrylic Foamed Backing <b>7450:</b> 100% Polyester with Acrylic Coating	ACOUSTICAL VALUE	<b>7400:</b> NRC 0.05 / SAA 0.03	<b>7450:</b> NRC 0.25 / SAA 0.25
MESH WEIGHT	<b>7400:</b> 12.53 oz/yd <sup>2</sup> (425 g/m <sup>2</sup> ) <b>7450:</b> 6.54 oz/yd <sup>2</sup> (221 g/m <sup>2</sup> )	ACOUSTICAL PERFORMANCE	NRC (Noise Reduction Coefficient) and SAA (Sound Absorption Average) tested in accordance with ASTM C423-09a.	

## SPECIFICATIONS

FIRE CLASSIFICATION	<b>Style 7400:</b> California U.S. Title 19 (small scale), CAN/ULC-S 109 (large and small scale), CAN/CGSB 2-4. 162-M80, NFPA 701 TM#1 (small scale), NFPA 701 TM#2 (large scale). <b>Style 7450:</b> California Technical Bulletin 117, IBC Section 803.1.1 (Class A Rating), NFPA 101 (Class A Rating).
BACTERIA AND FUNGAL RESISTANCE	ASTM G21, ASTM E 2180
ENVIRONMENTAL CERTIFICATION	Certified to GREENGUARD and GREENGUARD Gold standards for low chemical emissions into indoor air during product usage.
SAFE USE	RoHS/Directive 2002/95/EC, ANSI/WCMA A 100.1-2007 for lead content, US Consumer Product Safety Commission Section 101.
STANDARD USES	Roller shades & panel tracks.
UV PROTECTION	SheerWeave sun control fabrics are an effective way to reduce harmful UV rays. Phifer Incorporated is a proud member of the Skin Cancer Foundation's Corporate Council.
WARRANTY	5-year interior.
COLOR STATEMENT	Colors may vary slightly from swatch samples. All variations are within industry standards.

## TECHNICAL DATA

		SOLAR OPTICAL PROPERTIES				SHGC/G VALUE g-tot (glass & blind)	
		TS%	RS%	AS%	TV%	Single 1/4 CL	Insulating 1HA
COLOR	NUMBER						
Cotton	U80	0	64	36	0	0.27	0.21
Parchment	U81	0	64	36	0	0.27	0.21
Sesame	U82	0	64	36	0	0.27	0.21
Pebble	U83	0	64	36	0	0.27	0.21
Seagrass	U84	0	64	36	0	0.27	0.21
Shale	U85	0	64	36	0	0.27	0.21
Spice	U86	0	64	36	0	0.27	0.21
Flint	U87	0	64	36	0	0.27	0.21

## CLEANING INSTRUCTIONS

Fabric should be regularly dusted/vacuumed as appropriate. If commercial spot cleaners are used, they must first be tested and allowed to dry on an inconspicuous area to ensure compatibility.

**NOTE: Railroading this fabric is not recommended.**



PRODUCT CERTIFIED FOR  
LOW CHEMICAL EMISSIONS  
UL.COM/GG  
UL 2818



Style 7400

\*TS - Solar Transmittance, RS - Solar Reflectance, AS - Solar Absorptance, TV - Visual Transmittance \*SHGC = Solar Heat Gain Coefficient \*1/4 CL = 1/4" Clear Glass, 1 HA = 1" Heat Absorbing Glass \*Fabrics Installed Internally, Zero-Degree Profile Angle \*Solar Heat Gain Coefficient (SHGC) shown calculated according to Office of Building Technology, State and Community Programs, Energy Efficiency and Renewable Energy, U.S. Department of Energy's definition of SHGC. SHGC represents the percentage of solar heat gain that is transmitted to the interior through the glass and shading system. If you are using glass whose performance is listed in terms of SC, you may convert to SHGC by multiplying the SC by 0.87.



411 S. Pearl Street | Spiceland, IN 47385  
765.987.7999 | 800.238.7999

draperinc.com

For additional information, questions, or to request fabric samples, please contact your Draper sales representative or scan to visit [request.draperinc.com](http://request.draperinc.com)



© SheerWeave is a registered trademark of PHIFER INCORPORATED.  
© MICROBAN is a registered trademark of Microban Products Company.  
TM UL, the UL logos and the UL mark are trademarks of UL LLC.  
© PHIFER INCORPORATED 0224