

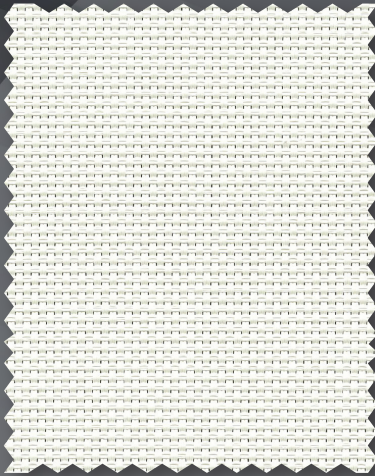
Style 4001 / 4400 / 4000 / 4100

1%, 3%, 5%, & 10% Openness

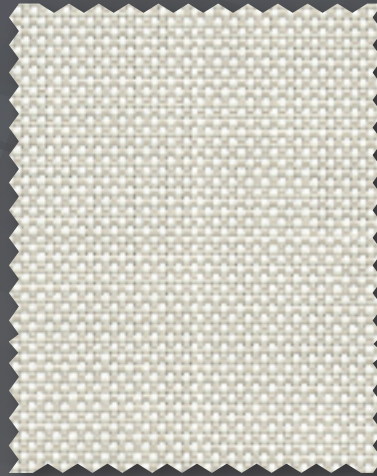
MADE WITH **ecolibrium™**
BIO BASED PLASTICIZERS



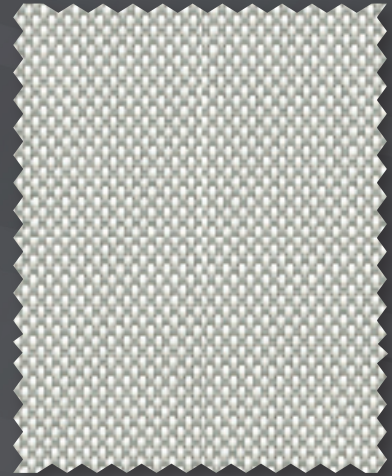
SHEERWEAVE®
BY PHIFER



U58 Chalk



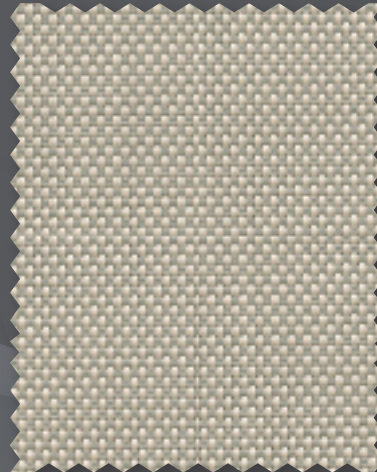
U59 Alabaster



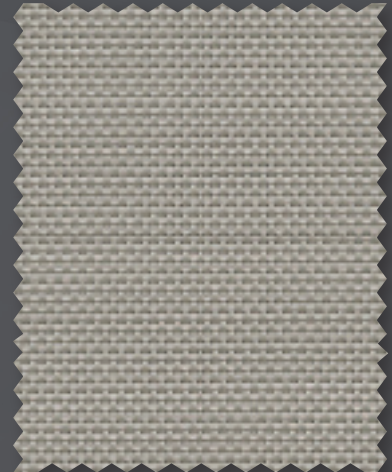
U62 Granite



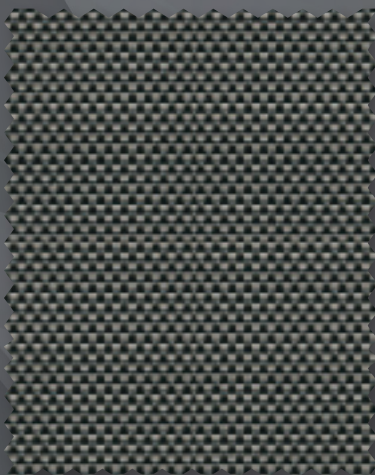
U60 Pebblestone



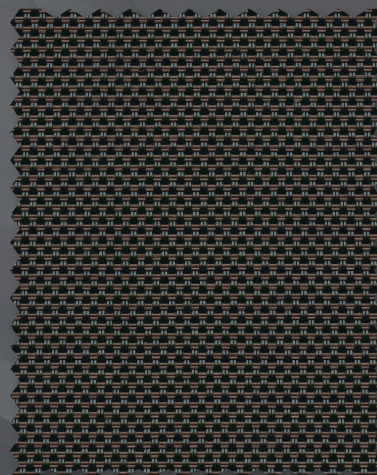
U61 Greystone



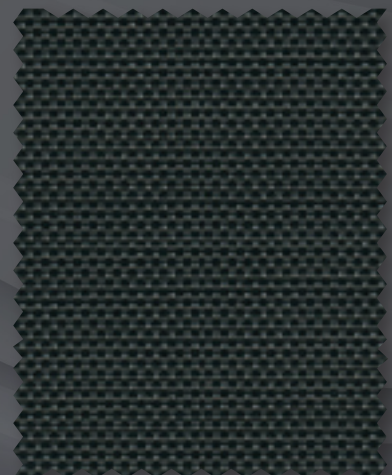
U63 Pewter



U64 Ash



U66 Tobacco



U65 Ebony

The above swatches are Style 4000 (5% openness).
These colors are available in all styles: 1%, 3%, 5%, and 10% openness.

Digital sample of actual colors may vary slightly.

 **DRAPER®**

SheerWeave® Style 4001 / 4400 / 4000 / 4100 1%, 3%, 5%, & 10%

As the only sun control fabrics in the market to use DOW's unique ECOLIBRIUM bio-based plasticizer, Styles 4001, 4400, 4000 and 4100 combine the durability of vinyl coated polyester with the latest in green PVC technology. ECOLIBRIUM is a renewable alternative to traditional plasticizers that lowers greenhouse gas emissions as much as 40% vs existing PVC compounds. Fabrics with DOW ECOLIBRIUM are phthalate-free, lead-free and RoHS compliant. These fabrics maintain all of the established benefits of traditional vinyl such as durability, cleanability and fabric longevity, and can be used in exterior shading systems.

STYLE	4001 (1%)	4400 (3%)	4000 (5%)	4100 (10%)
WIDTHS	63", 98" and 126" (160 cm, 248.9 cm and 320 cm)	63", 84", 98" and 126" (160 cm, 213.4 cm, 248.9 cm and 320 cm)	63", 84", 98" and 126" (160 cm, 213.4 cm, 248.9 cm and 320 cm)	63", 84" and 98" (160 cm, 213.4 cm and 248.9 cm)
ROLL LENGTH	30 Linear Yards 27.4 Linear Meters	30 Linear Yards 27.4 Linear Meters	30 Linear Yards 27.4 Linear Meters	30 Linear Yards 27.4 Linear Meters
COMPOSITION	25% Polyester 75% Vinyl on Polyester	25% Polyester 75% Vinyl on Polyester	25% Polyester 75% Vinyl on Polyester	25% Polyester 75% Vinyl on Polyester
(Over 50% of compound components are derived from crop-based feed stocks and minerals. Over 2/3 of total compound is derived from non fossil fuel based materials.)				
MESH WEIGHT	21.3 oz/yd ² (722 g/m ²)	19.9 oz/yd ² (675 g/m ²)	18.0 oz/yd ² (610 g/m ²)	16.7 oz/yd ² (566 g/m ²)
FABRIC THICKNESS	0.033 in (0.84 mm)	0.034 in (0.86 mm)	0.032 in (0.81 mm)	0.032 in (0.81 mm)
OPENNESS FACTOR	Approximately 1%	Approximately 3%	Approximately 5%	Approximately 10%
UV BLOCKAGE	Approximately 99%	Approximately 97%	Approximately 95%	Approximately 90%
ACOUSTICAL VALUE	NRC .55 / SAA .55	NRC .20 / SAA .19	NRC .10 / SAA .11	NRC .05 / SAA .05

Code	Color	SOLAR OPTICAL PROPERTIES				SHGC/G VALUE	
		TS	RS	AS	TV	SINGLE 1/4 CL	INSULATING 1 HA
STYLE 4001 - 1%							
U58	Chalk	7	83	10	4	0.18	0.17
U59	Alabaster	4	65	31	2	0.27	0.21
U60	Pebblestone	2	51	47	2	0.35	0.25
U61	Greystone	2	38	60	1	0.41	0.28
U62	Granite	3	51	46	2	0.35	0.25
U63	Pewter	2	33	65	2	0.44	0.30
U64	Ash	2	14	84	2	0.55	0.34
U65	Ebony	1	4	95	1	0.60	0.37
U66	Tobacco	1	4	95	1	0.60	0.37
STYLE 4400 - 3%							
U58	Chalk	10	79	11	7	0.20	0.18
U59	Alabaster	7	65	28	5	0.27	0.21
U60	Pebblestone	4	49	47	4	0.36	0.26
U61	Greystone	4	40	56	3	0.41	0.28
U62	Granite	6	55	39	5	0.33	0.24
U63	Pewter	4	32	64	4	0.46	0.30
U64	Ash	3	12	85	3	0.56	0.35
U65	Ebony	3	4	93	3	0.60	0.37
U66	Tobacco	3	5	92	3	0.60	0.37
STYLE 4000 (3500)- 5%							
U58	Chalk	14	77	9	11	0.23	0.19
U59	Alabaster	6	66	28	4	0.27	0.21
U60	Pebblestone	8	48	44	8	0.38	0.26
U61	Greystone	8	38	54	8	0.43	0.29
U62	Granite	9	51	40	9	0.36	0.26
U63	Pewter	8	31	61	7	0.47	0.31
U64	Ash	6	13	81	6	0.56	0.35
U65	Ebony	7	4	89	8	0.61	0.38
U66	Tobacco	6	6	88	6	0.60	0.37
STYLE 4100 - 10%							
U58	Chalk	17	74	9	14	0.25	0.20
U59	Alabaster	15	61	24	13	0.32	0.23
U60	Pebblestone	12	46	42	12	0.39	0.27
U61	Greystone	12	36	52	11	0.45	0.29
U62	Granite	14	52	34	13	0.37	0.26
U63	Pewter	11	29	60	11	0.49	0.31
U64	Ash	11	12	77	11	0.58	0.36
U65	Ebony	10	4	86	10	0.62	0.38
U66	Tobacco	12	5	83	12	0.61	0.38

TS = Solar Transmittance
RS = Solar Reflectance
AS = Solar Absorptance
TV = Visual Transmittance

SHGC = Solar Heat Gain Coefficient
1/4 CL = 1/4" Clear Glass
1 HA = 1" Heat Absorbing Glass
Fabrics Installed Internally Zero-Degree Profile Angle. For additional performance values, test references and technical definitions visit phifer.com.

FIRE CLASSIFICATION

Fire classifications are subject to change. Please visit phifer.com for current information.

BACTERIA AND FUNGAL RESISTANCE

ENVIRONMENTAL CERTIFICATION

SAFE USE

WARRANTY

ACOUSTICAL PERFORMANCE

UV PROTECTION

CAN/CGSB2-4.162-M80
NFPA 101 (Class A Rating)
NFPA 701 TM#1 (small scale)
NFPA 701 TM#2 (large scale)

California U.S. Title 19 (small scale)
BS 5867 Part 2 Type B Performance
IBC Section 803.1.1 (Class A Rating)
CAN/ULC-S 109 (Style 4001 small scale)

ASTM E 2180 ASTM G21 ASTM G22
AATCC30 Part 3 ASTM D 3273
GREENGUARD Mold and Bacteria Standard
ASTM 6329. Includes Microban antimicrobial additives.

GREENGUARD GREENGUARD Gold
Certified to these standards for low chemical emissions into indoor air during product usage. DOW ECOLIBRIUM Plasticizer is a USDA Certified Bio-Based Product.

RoHS Compliant REACH Compliant
ANSI/WCMA A 100.1-2007 for lead content
US Consumer Product Safety Commission Section 101.

10-year interior / 5-year exterior

NRC (Noise Reduction Coefficient) and SAA (Sound Absorption Average) tested in accordance with ASTM C423-09a.

SheerWeave sun control fabrics are an effective way to reduce harmful UV rays. Phifer Incorporated is a proud member of the Skin Cancer Foundation's Corporate Council.



411 S. Pearl Street | Spiceland, IN 47385
765.987.7999 | 800.238.7999
draperinc.com

For additional information, questions, or to request fabric samples, please contact your Draper sales representative or scan to visit request.draperinc.com



© SheerWeave is a registered trademark of PHIFER INCORPORATED. © TM ECOLIBRIUM and the DOW Diamond are trademarks of The Dow Chemical Company ("Dow") or an affiliated company of Dow. © MICROBAN is a registered trademark of Microban Products Company. TM UL, the UL logos and the UL mark are trademarks of UL LLC.
© PHIFER INCORPORATED. 1124