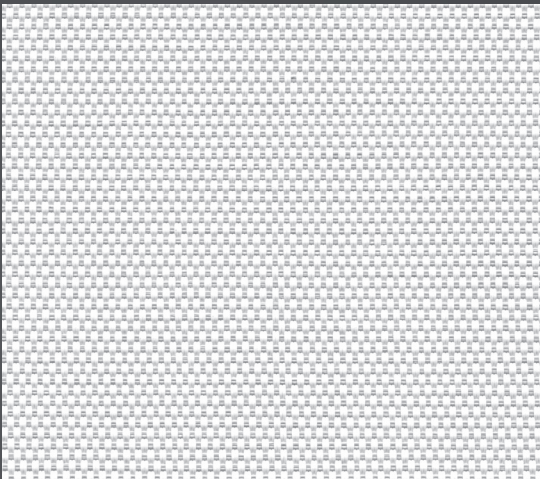


# SheerWeave® Privacy

0.1% Openness



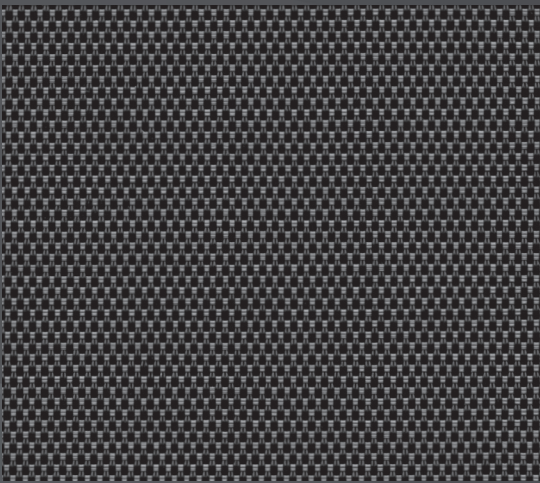
U58 Chalk



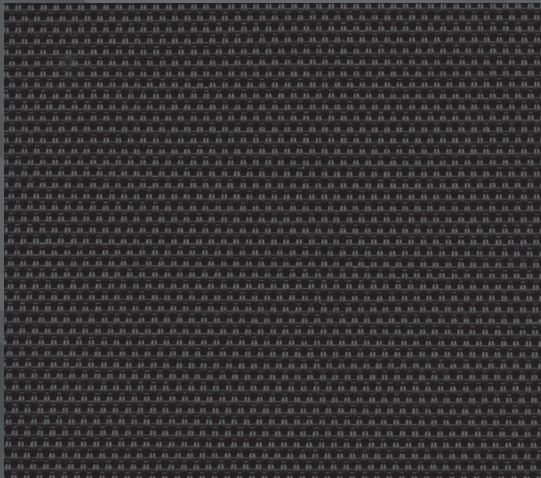
U59 Alabaster



U62 Granite



U64 Ash



U65 Ebony

Digital sample of actual colors may vary slightly.



# SheerWeave® Privacy 0.1% Openness Fabric

SheerWeave® Privacy with DOW ECOLIBRIUM™ is an innovative sun control fabric that offers additional privacy without total darkness. SheerWeave Privacy allows light and illumination during the day without sacrificing privacy and is made with the same DOW ECOLIBRIUM™ bio-based plasticizer used in SheerWeave Style 4001/4400/4000/4100. This renewable alternative to traditional petroleum-based plasticizers lowers greenhouse gas emissions by as much as 40% vs existing PVC compounds.

## SHEERWEAVE PRIVACY

WIDTHS	126" (320 cm)	FABRIC THICKNESS	0.034" (0.86 mm)
ROLL LENGTH	30 Linear Yards (27.4 Linear Meters)	OPENNESS FACTOR	Approximately 0.1%.
COMPOSITION	17% Polyester / 83% Vinyl on Polyester (Over 50% of compound components are derived from crop-based feed stocks and minerals. Over 2/3 of total compound is derived from non-fossil fuel based materials.)	UV BLOCKAGE:	Approximately 99.9%.
		ACOUSTICAL VALUE	NRC 0.05 / SAA 0.05
MESH WEIGHT	18.9 oz/yd <sup>2</sup> (641 g/m <sup>2</sup> )	ACOUSTICAL PERFORMANCE	NRC (Noise Reduction Coefficient) and SAA (Sound Absorption Average) tested in accordance with ASTM C423-09a.

## SPECIFICATIONS

FIRE CLASSIFICATION	California U.S. Title 19 (small scale), NFPA 101 (Class A Rating), NFPA 701 TM#1 (small scale), NFPA 701 TM#2 (large scale), CAN/CGSB2-4.162-M80, BS 5867 Part 2 Type B Performance, IBC Section 803.1.1 (Class A Rating), CAN/ULC-S 109 (large & small scale). Fire classifications are subject to change. Please visit phifer.com for the most current information.
BACTERIA AND FUNGAL RESISTANCE	ASTM E 2180, ASTM G21, ASTM G22, AATCC30 Part 3, ASTM D 3273, GREENGUARD Mold and Bacteria Standard ASTM 6329. Includes Microban antimicrobial additives.
ENVIRONMENTAL CERTIFICATION	GREENGUARD and GREENGUARD Gold Certified to these standards for low chemical emissions into indoor air during product usage. DOW ECOLIBRIUM Plasticizer is a USDA Certified Bio-Based Product.
SAFE USE	RoHS Compliant ANSI/WCMA A 100.1-2007 for lead content and US Consumer Product Safety Commission Section 101. REACH Compliant.
UV PROTECTION	SheerWeave sun control fabrics are an effective way to reduce harmful UV rays. SheerWeave Privacy has earned the Seal of Recommendation from the Skin Cancer Foundation as an effective UV protectant. Phifer Incorporated is a proud member of the Skin Cancer Foundation's Corporate Council.
WARRANTY	10-year interior, 5-year exterior.

## The Dow Ecolibrium Value Proposition:

DOW ECOLIBRIUM™ Bio-Based Plasticizers offer a renewable alternative that is phthalate-free, offering a more sustainable option while having the same great performance and feel of current materials.

- Lowers greenhouse gas emissions as much as 40% vs. existing PVC compounds.
- 98% of the plasticizer is derived from non fossil fuel based feed stock.
- Phthalate-free.
- Lower carbon footprint\*.
- LEED credits for rapidly renewable content may be available\*\*.
- RoHS compliant.

- Ability for compound to be recycled in a standard vinyl stream.
  - Maintains all of the established benefits of traditional vinyl, such as durability, cleanability and fabric longevity.
- \*Based on Lifecycle Analysis (LCA) conducted by The Dow Chemical Company and third party reviewed. \*\*See website [www.usgbc.org](http://www.usgbc.org) for more information.

		SOLAR OPTICAL PROPERTIES				SHGC/G VALUE g-tot (glass & blind)	
Code	Color	TS	RS	AS	TV	SINGLE 1/4 CL	INSULATING 1 HA
<b>Privacy</b>							
U58	Chalk	7	83	10	4	0.17	0.17
U59	Alabaster	4	73	23	2	0.23	0.19
U62	Granite	3	64	33	1	0.27	0.21
U64	Ash	0	9	91	0	0.57	0.36
U65	Ebony	0	4	96	0	0.60	0.37

\*TS - Solar Transmittance, RS - Solar Reflectance, AS - Solar Absorptance, TV - Visual Transmittance \*SHGC = Solar Heat Gain Coefficient \*1/4 CL = 1/4" Clear Glass, 1 HA = 1" Heat Absorbing Glass \*Fabrics Installed Internally, Zero-Degree Profile Angle \*Solar Heat Gain Coefficient (SHGC) shown calculated according to Office of Building Technology, State and Community Programs, Energy Efficiency and Renewable Energy, U.S. Department of Energy's definition of SHGC. SHGC represents the percentage of solar heat gain that is transmitted to the interior through the glass and shading system. If you are using glass whose performance is listed in terms of SC, you may convert to SHGC by multiplying the SC by 0.87.



411 S. Pearl Street | Spiceland, IN 47385  
765.987.7999 | 800.238.7999

[draperinc.com](http://draperinc.com)

For additional information, questions, or to request fabric samples, please contact your Draper sales representative or scan to visit [request.draperinc.com](http://request.draperinc.com)



PRODUCT CERTIFIED FOR LOW CHEMICAL EMISSIONS  
UL.COM/GG  
UL 2818



© SheerWeave is a registered trademark of PHIFER INCORPORATED.  
© TM ECOLIBRIUM and the DOW Diamond are trademarks of The Dow Chemical Company ("Dow") or an affiliated company of Dow.  
© MICROBAN is a registered trademark of Microban Products Company.  
TM UL, the UL logos and the UL mark are trademarks of UL LLC.  
© PHIFER INCORPORATED V24C 040125